

01923 270 666
Kings Langley, Abbots
Langley & Watford:

01442 822 210
Property
Management

01442 879 996
& Country Homes:
Berkhamsted Select

01442 828 222
Tring, Wendover,
Aylesbury & Villages:

Is there a price that would tempt you to sell or let your property?
Contact us for a free valuation
and let's see if we can tempt you!

Temptation comes in many forms...



Tring

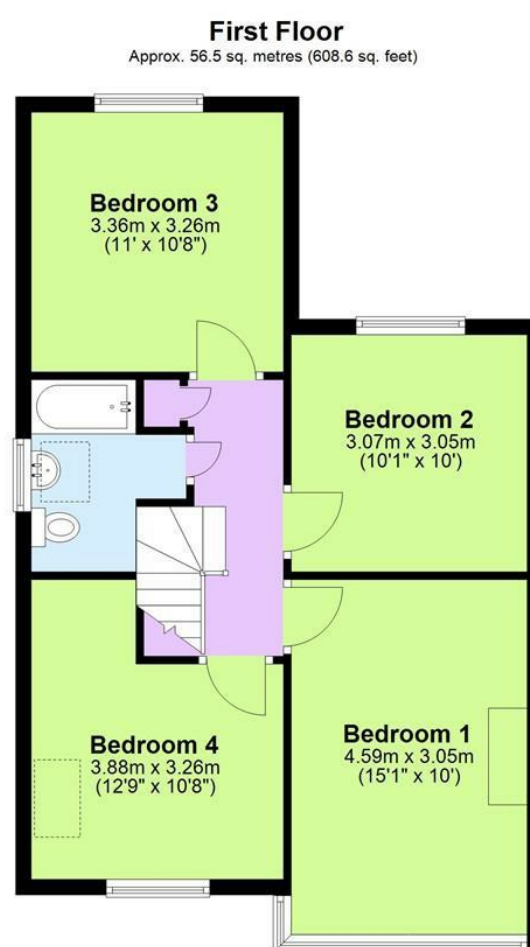
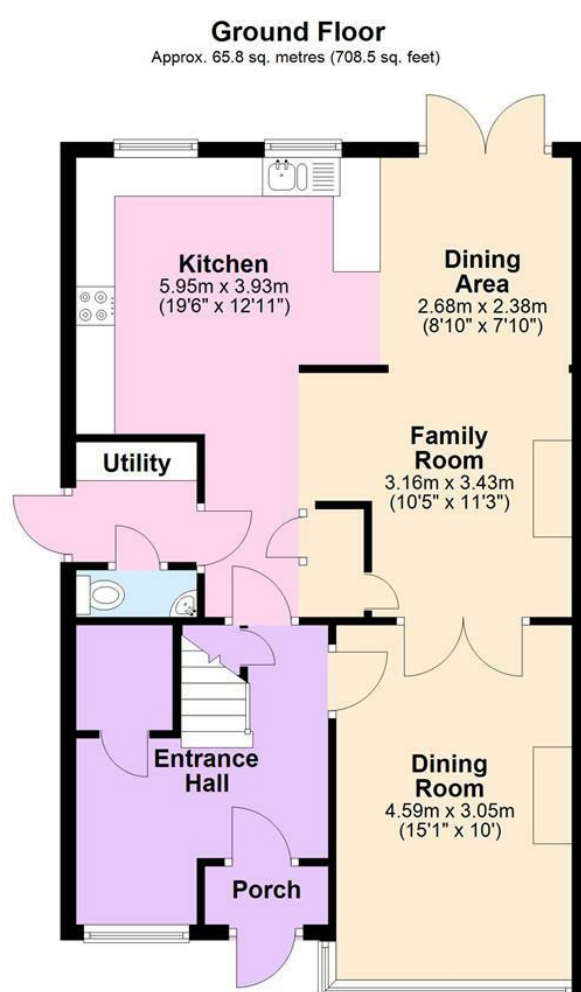
ASKING PRICE

£750,000

" SALE AGREED PRIOR TO ADVERTISING AS PART OF OUR DISCREET MARKETING CAMPAIGN" An immaculately presented 1930's family home which has been extended by the current owners to offer a wonderful open plan kitchen/dining/family room at the rear with wood burning stove, separate utility room and cloakroom. The spacious entrance hall has a study area while the first floor has four double bedrooms and family bathroom.

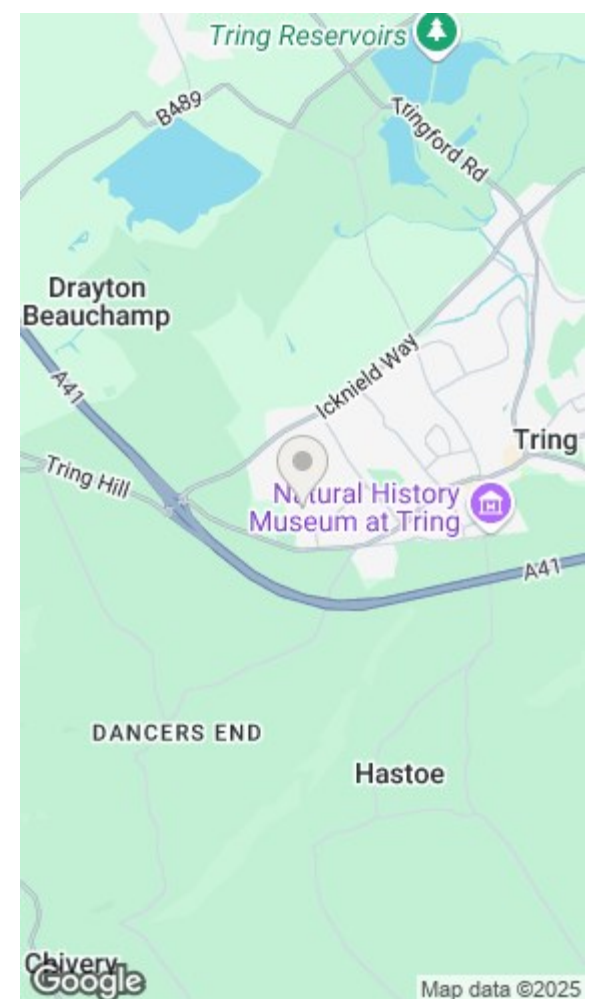


www.sterlinghomes.co.uk



Total area: approx. 122.4 sq. metres (1317.1 sq. feet)

All measurements are approximate.
Plan produced using PlanUp.



Energy Efficiency Rating		Environmental Impact (CO ₂) Rating	
Current	Potential	Current	Potential
69	83		

Energy Efficiency Rating: 69 (Current), 83 (Potential)

Environmental Impact (CO₂) Rating: (Current and Potential ratings are not explicitly shown in the image)

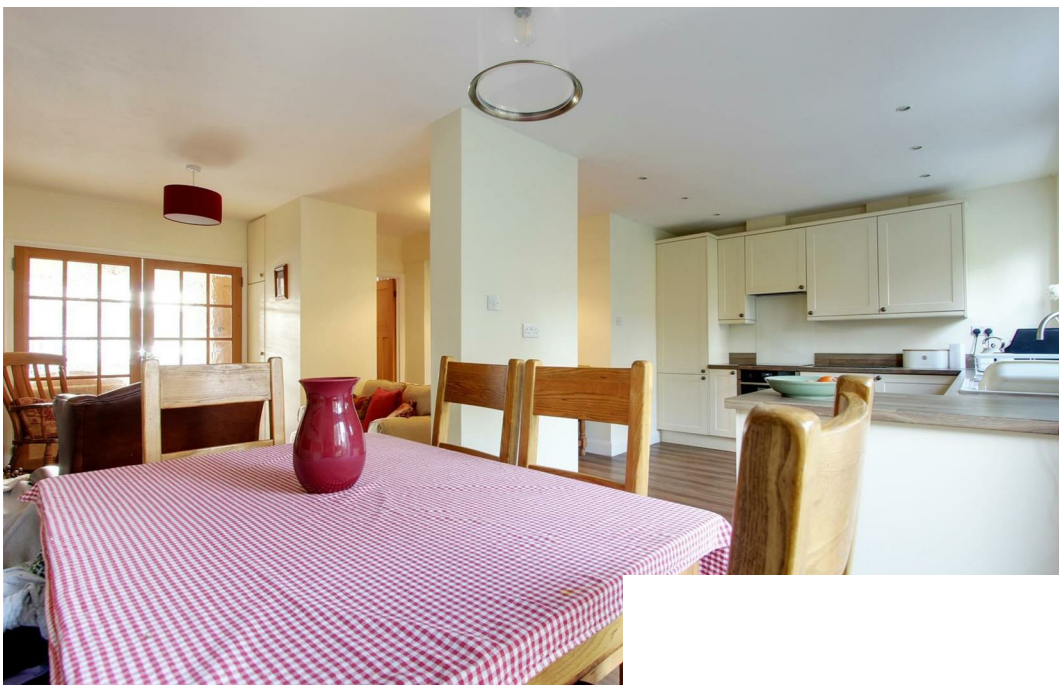
England & Wales EU Directive 2002/91/EC



www.sterlinghomes.co.uk



www.sterlinghomes.co.uk



www.sterlinghomes.co.uk



www.sterlinghomes.co.uk